

IES
SyncLamp Control
User Manual
International/English Edition
for version VH31 and beyond
Manual rev. YL04
2024-12-02 KNR

IES Ingenieurbüro für Elektronikentwicklung und Spezialgerätebau Dr. Ulrich Bahr
In den Waashainen 2
38108 Braunschweig
Germany
Phone: +49 531 701273-12
Fax: +49 531 701273-19
Office@IES-Elektronikentwicklung.de
www.IES-Elektronikentwicklung.de

1. Starting the Software

Start the SyncLamp Control software by doubleclicking the 'SyncLampControl-XXYY.exe', XXYY being 2 letters and 2 digits referring to the software version. Either the file or a shortcut to it should have been installed on the user's desktop or at a different location where the user can easily find it.

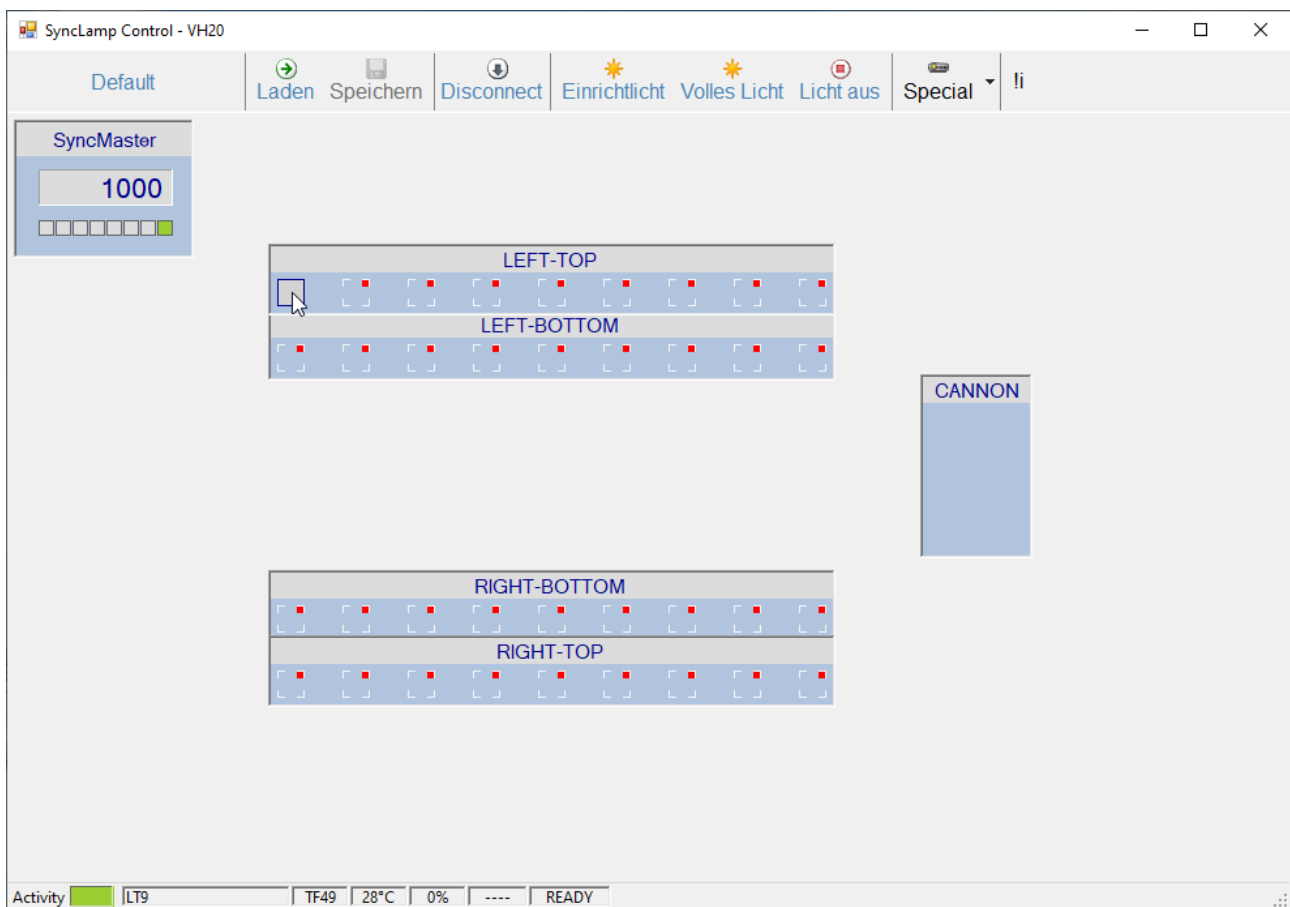
On first startup SyncLamp Control will need admin rights to enable network access!

Upon startup SyncLamp Control will attempt to connect to all devices in the user's installation and if successful directly move on to the Main Screen. Only if an error occurs it will halt at the Connection Screen and wait for the user's prompt to proceed.

For details see **3. Connection Screen**.

2. Main Screen

The SyncLamp Control Main Screen consists of three areas, a top row of mainly functional buttons, a big visualization that should vaguely resemble the layout of the user's installation, and a foot row of some status indicators.



2.1 Top row

'Default' – name of currently loaded .set file, in this case 'Default.set'

'Load' – to load a different .set file

- 'Store' – to save the current .set file (non-functional in current version)
- 'Disconnect'/'Connect' – to disconnect and connect without closing the program
- 'Setup light' – low light for setup, by default this equals the CLMP01 command
- 'Full light' – full light, by default this equals the SLMP03 command
- 'Light off' – light off
- 'Special' – drop down menu with advanced functions, see **2.4 Special** (might be deactivated upon customer request in some versions)
- '!' – hides the big visualization reducing the window to top and foot row only and activates 'always on top' mode for the user's convenience

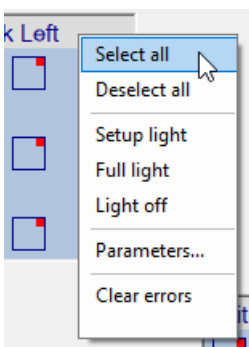
2.2 Visualization

The example installation shown has two light sails carrying two rows of nine lamps each for a total of 36 lamps in four control groups. Also there is a lamp group symbolizing the control room containing the sync generator, and a dummy lamp group containing nothing symbolizing a cannon that shoots a sled away, a typical crash testing site.

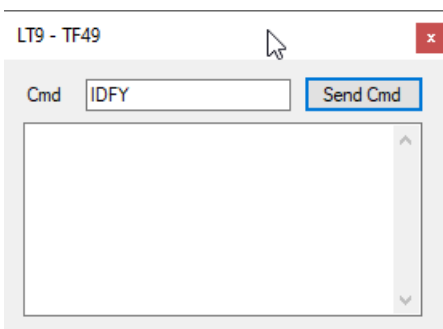
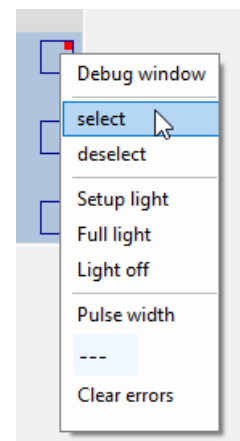
Lamps are shown as little squares, solid black lines for active lamps, dashed white lines for inactive lamps. Grey background means lamp is off, light yellow is low light, bright yellow is full light; red means the lamp reported an error, purple indicates an unknown/unexpected error (overheating is a possible scenario here); inactive lamps have clear background. A little red square in the corner means there is a connection issue.

The sync generator shows the current sync frequency as well as a line of little squares symbolizing the I/O line in the display of the sync generator itself, grey is 0, green is 1.

Right-clicking a lamp group or a single lamp opens slightly different context menus:



- 'Select all' / 'select' – sets all lamps in the lamp group / the selected lamp to active
- 'Deselect all' / 'deselect' – sets all lamps in the lamp group / the selected lamp to inactive
- 'Setup light' / 'Full light' / 'Light off' – same commands as above but for the lamp group / the selected lamp only
- 'Clear errors' – makes the little red square vanish, as sometimes a resolved connection issue might be stuck, if issue still persists the red square will reappear



- 'Parameters...' – non-functional in current version
- 'Pulse width' – set pulse width for selected lamp
- 'Debug window' – opens a little diagnostic console to directly communicate with selected lamp using the diagnostic commands

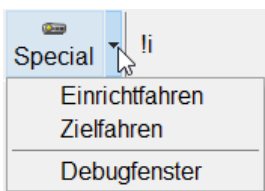
Double-clicking the sync generator shows two more tabs, 'Sync' is non-functional, 'IO-Ports' allows for customization of IO-Ports in case they are not hardwired, depending on sync generator details

2.3 Bottom row

There are seven indicators in the bottom row, from left to right:

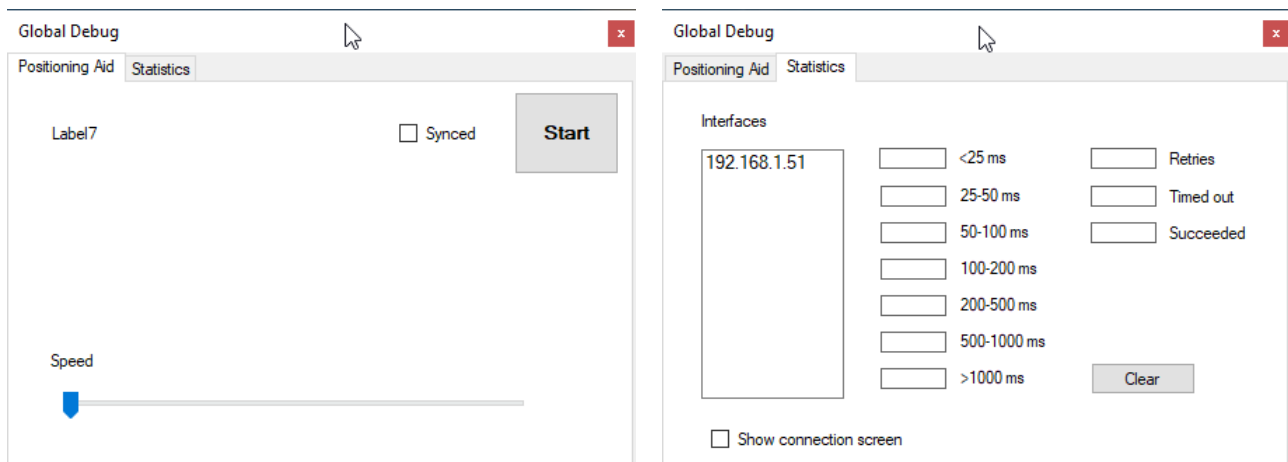
- 'Activity' plus a colour – **green** means everything is okay; **yellow** means busy; **red** means there is a problem, e.g. one or more active lamps are unresponsive, there are no active lamps, etc.
- name of the lamp group or designation of individual lamp (sensitive to mouseover)
- serial number of individual lamp (only if mouseover on single lamp)
- temperature of lamp / hottest lamp in lamp group / entire installation (mouseover)
- should show cell status for lamps with accumulators, but is non-functional
- shows light status, '----' means off, 'setup' means setup light, 'full' means full light
- 'READY' / 'not RDY' – if there is at least one active lamp and no active lamp shows an error, this should signal 'READY', otherwise 'not RDY', function is still unreliable, use with caution!

2.4 Special



'Einrichtfahren' & 'Zielfahren' – controls drives to position lights, only works if IES installed the drives and all such installations are different, so no general description can be given, for most users this will just be non-functional

'Debugfenster' – opens the debug window:



Positioning Aid – to support the mentioned positioning function, does not work

Statistics – shows package loss in the network, useful to analyse communication issues, at the bottom of this tab there is a function to show the connection screen again, see below

3. Connection Screen

```
SyncLamp Control - VH20
Default [Laden]
Start connecting...
My IP is: [redacted]
My IP is: [redacted]
My IP is: 192.168.1.173
Opening TCP: 192.168.1.51
TCP 192.168.1.51 is open.
Identified SYNMM
Total lamps to connect: 36
No answer UF18 LT1 - deselected.
No answer UF20 LT2 - deselected.
No answer UF22 LT3 - deselected.
No answer UF24 LT4 - deselected.
No answer UF26 LT5 - deselected.
No answer UF28 LT6 - deselected.
No answer UF30 LT7 - deselected.
No answer UF32 LT8 - deselected.
Identified TF49 LT9
No answer UF19 LB1 - deselected.
No answer UF21 LB2 - deselected.
No answer UF23 LB3 - deselected.
No answer UF25 LB4 - deselected.
No answer UF27 LB5 - deselected.
No answer UF29 LB6 - deselected.
No answer UF31 LB7 - deselected.
No answer UF33 LB8 - deselected.
No answer UF35 LB9 - deselected.
No answer UF36 RT1 - deselected.
No answer UF38 RT2 - deselected.
No answer UF40 RT3 - deselected.
No answer UF42 RT4 - deselected.
No answer UF44 RT5 - deselected.
No answer UF46 RT6 - deselected.
No answer UF48 RT7 - deselected.
No answer UF50 RT8 - deselected.
No answer UF52 RT9 - deselected.
No answer UF37 RB1 - deselected.
No answer UF39 RB2 - deselected.
No answer UF41 RB3 - deselected.
No answer UF43 RB4 - deselected.
No answer UF45 RB5 - deselected.
No answer UF47 RB6 - deselected.
No answer UF49 RB7 - deselected.
No answer UF51 RB8 - deselected.
No answer UF53 RB9 - deselected.
Press ESC to proceed.
Activity Global
```

The Connection Screen shows a detailed protocol of the SyncLamp Control startup process.

First the host PC's IP is determined; then a connection to the sync generator's interface is attempted, from there a connection to the sync generator itself is established. Please note that these two steps can fail independently as these are two different circuit boards – while sharing the sync generator's casing and power supply, they operate independently and can produce errors independently.

Next all the lamps in the installation are polled in order.

If everything works this whole process should be rather quick and happen almost unnoticeably before moving on to the Main Screen.

If any errors happened the process will halt when finished and wait for the user's prompt. In this case please inspect the protocol carefully as not all errors are highlighted in red.

The Connection Screen can later be revisited from the debug window in the special menu, see **2.4 Special**.