

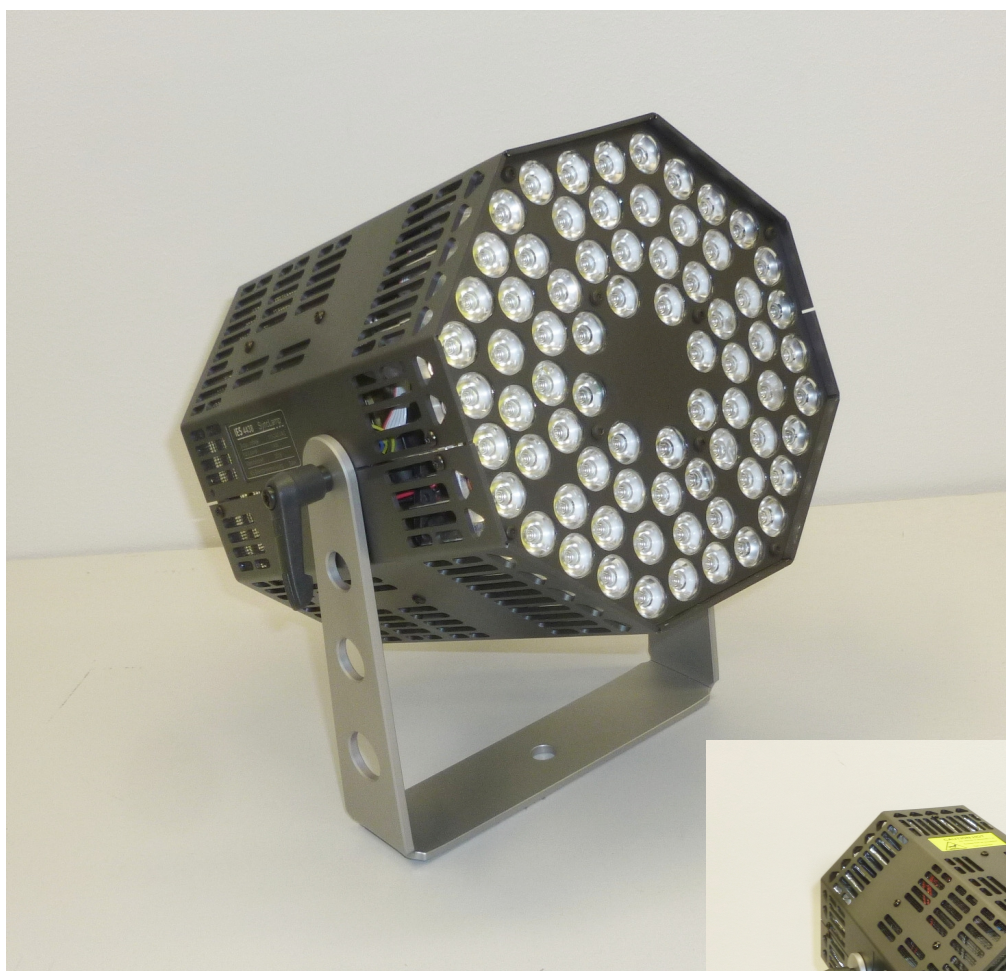
IES 4438 LED SyncLamp



PRELIMINARY SHORTFORM DATA

LED SyncLamp for High-Speed Video.

- ☺ **96 000 lm continuous**
- ☺ **>200 000 lm in sync mode**
- ☺ **Selectable illumination angles 36°, 48°, 60°, 120°**
- ☺ **Light weight 2.9 kg**
- ☺ **Small dimensions 200 x 165 x 165 mm³**



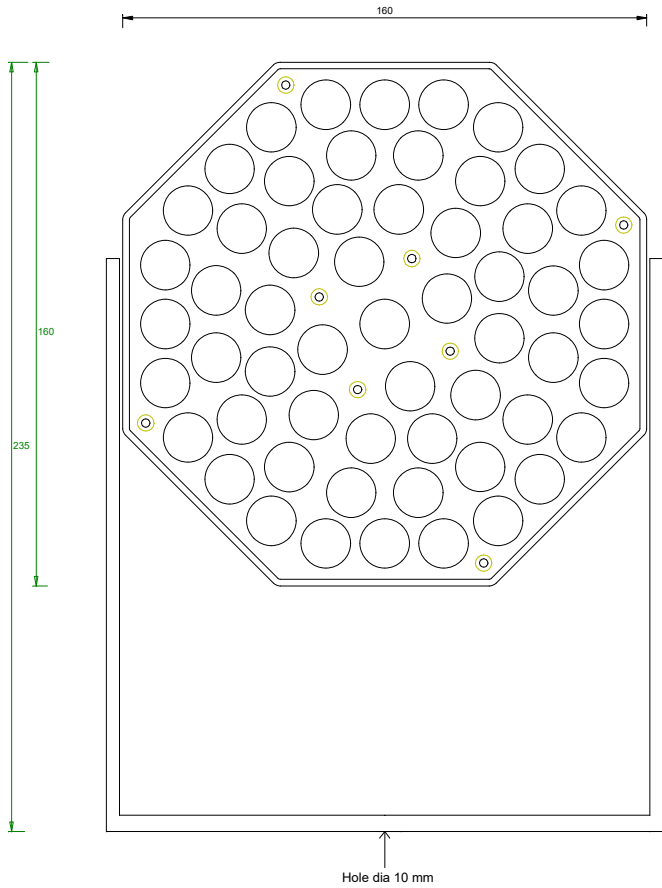
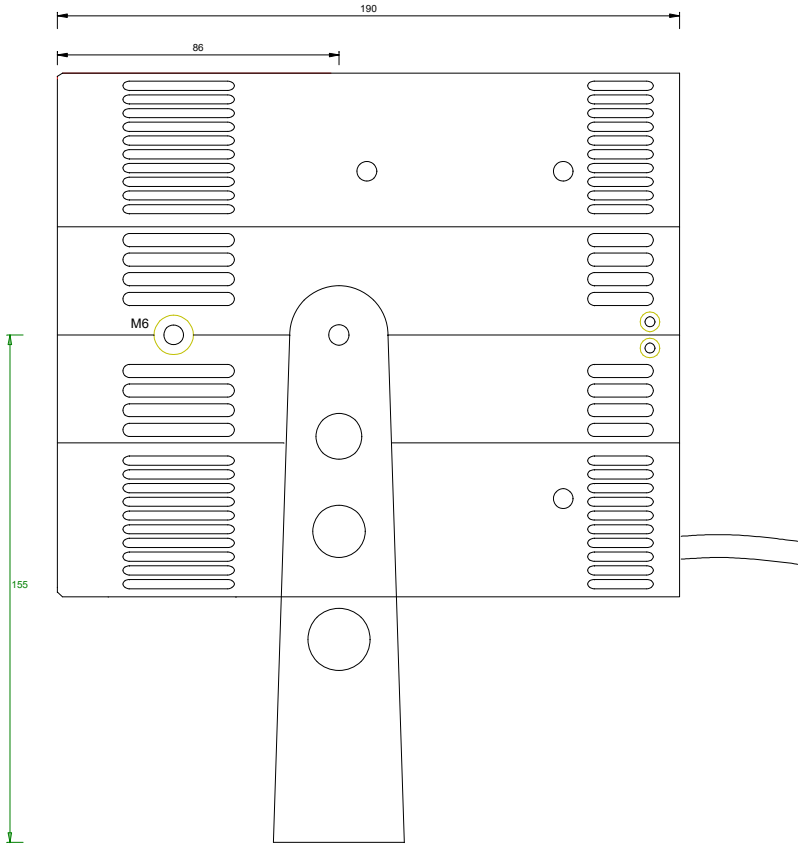
IES Ingenieurbüro für Elektronikentwicklung und Spezialgerätebau

Postanschrift
In den Waashainen 2
D-38108 Braunschweig

FON +49 531 701273-0
FAX +49 531 701273-19

Bankverbindung Postbank Hannover
BLZ 250 100 30, Konto 905 693 302
UStIDNr. DE 177335140

Mount information



Specifications

Metrics	
Dimensions	200 x 165 x 165 mm ³
Weight	2.9 kg

Environment	
Temperature range	0°C ... +40°C
Acceleration	not tested

Electrical Interface	
Connector	IEC for Power, RJ-45 for Sync and CMD
Power	110-230 VAC, 1 kW

Illumination Parameters	
Illumination angle	36°, 48°, 60°, 120°
Lumen output cont mode	96 000 lm
Lumen output sync mode	> 200 000 lm

Angle	1 m	2 m	3 m	4 m
36°	186 klx	47 klx	21 klx	12.5 klx
48°	115 klx	29 klx	13 klx	7.7 klx
60°	89 klx	22 klx	10 klx	6 klx
120°	31 klx	8 klx	3.7 klx	2.2 klx

Ordering information: IES 4438

Also available:

- IES 4421 LED head 24000 lm
- IES 4422 LED head 12000 lm
- IES 4423 LED head 24000 lm
- IES 4425 LED head 48000 lm
- IES 4412 Stationary LED Controller
- IES 4416 Onbord LED Controller

Information is provided without warranty and is subject to change without notice. We reserve the right to make changes whenever necessary to improve to the product.
Revision 2018-12